

INSPIRE & EMPOWER

• EACH STUDENT •



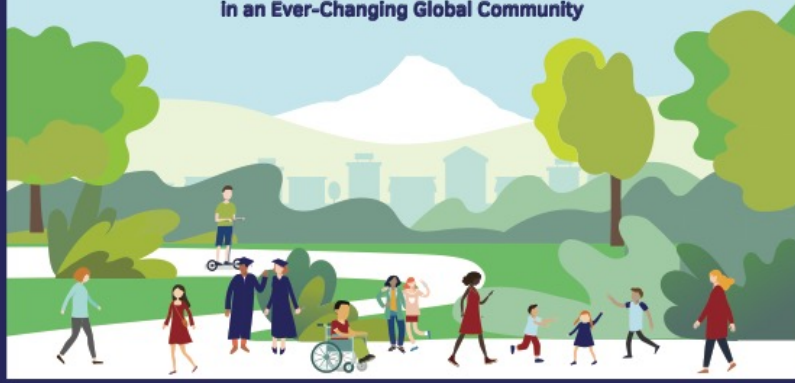
Culturally Responsive Graduates Who Will Thrive in an Ever-Changing Global Community



INSPIRE AND EMPOWER
◦ EACH STUDENT ◦

PORTRAIT OF A GRADUATE

**Culturally Responsive Graduates Who Will Thrive
in an Ever-Changing Global Community**



Independent Lifelong Learners

are critical thinkers who are motivated, empowered, curious, and passionate knowledge seekers who take ownership of their ongoing learning through authentic connections and strategic risk-taking.

Adaptable Collaborators

are flexible with their expectations of process and outcomes. Adaptable collaborators strive for mutual understandings and constructive contributions using teamwork skills they apply to various modes as they work toward a common goal.

Compassionate Communicators

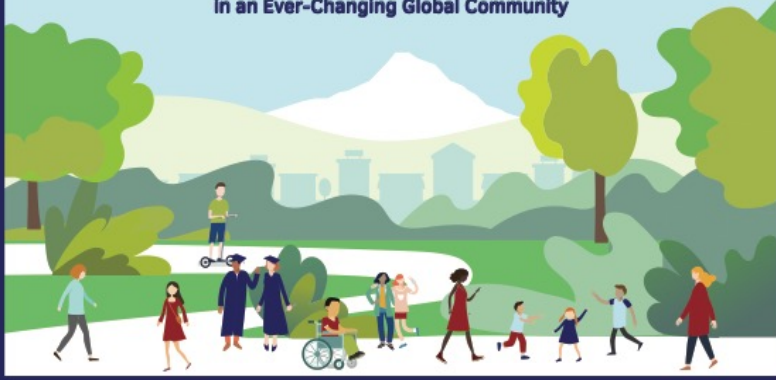
intently listen with determination to understand through the lens of others' ideas, culture, and experiences; speak and write in multiple languages with positive regard and respect towards all, emphasizing truthfulness, open-mindedness, and acceptance.



INSPIRE AND EMPOWER
◊ EACH STUDENT ◊

PORTRAIT OF A GRADUATE

**Culturally Responsive Graduates Who Will Thrive
In an Ever-Changing Global Community**



Responsible Creators

use thoughtful intention to innovate with purpose in ways that honors and helps, not only themselves but also others and the community, while considering future impacts.

Open Minded, Critical Thinkers

develop high levels of concentration, more in-depth analytical abilities, and improved thought processing that will prepare students for the global era of high-speed communications, and complex and rapid change to solve a problem while considering differing points of view.

Globally Aware Community Members

understand and appreciate multiple perspectives and take meaningful action to impact and influence individual behaviors and world events.