

limadha la 'astatie takhatiy 30 daqiqatan min alqira'at allyl?

daeuna shakluh --- mathymatykaly!

altaalib yaqra 30 daqiqatan khms layal min kuli 'asbue:
altaalib b yaqra 4 daqayiq faqat fi allayli, 'aw la ealaa al'iitlaq!

alkhatwat 1: darab daqayiq laylat x 5 marrat kli 'usbuein.
altaalib a yaqra 30 daqiqatan x 5 marrat fi al'usbue = 150 daqiqatan /
'usbue
yaqra altaalib b 4 daqayiq faqat x 5 marrat fi al'usbue = 20 daqiqatan /
'usbue

alkhatwat 2: darab daqayiq fi al'usbue x 4 'asabie kl shuhrin.
altaalib A yaqra 600 daqiqatan fi alshahr
yaqra altaalib b 80 daqiqatan faqat fi alshahr

alkhatwat 3: darab daqayiq fi alshahr x 9 'ashhur fi alsanat aldirasiat.
yaqra altaalib a 5400 daqiqatan fi alsanat aldirasia
yaqra altaalib b 720 daqiqatan faqat fi alsanat aldirasia

altaalib mumarasat taqra ma yueadil 15 yawmaan madrasiana fi alsanat.
altaalib B yahsul ealaa ma yueadil faqat 2 'ayam almadrast min mumarasat alqara'ati.

bhlwl nihayat alsafi alssadisi, 'iidha kan altaalib a walitalib b yuhafizan ealaa nfs eadat alqira'at - dun aihtisab alqira'at fi eutlat nihayat al'usbue 'aw 'athna' aleutlat alsayfiat:

sawf yqra altaalib (a) ma yeadil 60 ywma dirasaya kamila.
sawf yaqra altaalib b ma yueadil 12 yawmaan madrasiana faqt.

wayutawaqae almar' 'an tatasie fajwat almaelumat almhtfz biha bishakl kabirin, wamin almuakid 'ana al'ada' almadrasia sayakun bila shk. kayf taetaqid 'ana altaalib b sawf yasheur binafsih katalb?



bed al'asyilat liltafakir:

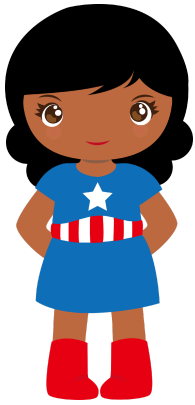
ma altaalib aldhy tatawaaqae 'an tqrah bishakl 'afdal?

'ay talab tatawaaqae 'an tuearif almazid?

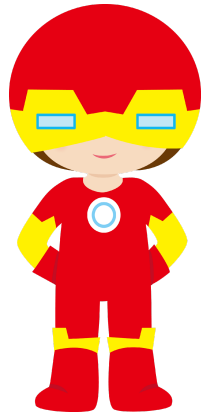
ma altaalib aldhy tatawaaqae 'an taktubah bishakl 'afdal?

'ay talab tatawaaqae 'an yakun ladayk mufradat 'afdal?

'ay talab tatawaaqae 'an takun 'akthar najahaan fi almadrasa ... wafi alhaya?



musaeadat tiflk tusbih qari 'afdal



'asyilat litarah tiflak 'athna' qara'at nas nuna-fiktiun.

ma hi alfikrat alrayiysiat llns?

madha taalamat min qira'at alns?

hal hnak 'ayu kalimat la taerif ma tueniha?

ma hi bed alkalimat aljadidat alty taelimatuha?

hal ladayk 'ayu 'asyilat baed qira'at hdha?

hal kanat hunak 'ayu mizat muhima (rsuwm bayaniat, rusum bayanit, swr) kanat muhima?

'ayn yumkinuk aleuthur ealaa mazid min almaelumat hawl hdha almawdue?

hal 'aejabak hdha alns? lamaa w lamaa la?



musaeadat tiflk tusbih qari 'afdal



'asyilat litarah tiflak 'athna' qara'at nas fiktiun.

man hu alshakhsiat alrayiysia?

ma hu al'iiedad?

ma hi almushkilat fi alqisat wakayf tama halha?

madha tatawaqae 'an yahduth baed dhlk fi alqsa?

limadha taetaqid 'ana alkatib aikhtar hdha allaqab lilqasa?

hal tuhibu eunwan alqasa? lamaa w lamaa la?

hal yumkinuk altafkir fi eunwan mukhtalif lilqsa?

ma hu alttabie min alqisat alty turid 'an takun sadiquk? limadha a?

'aya juz' min alqisat kan 'akthar 'iithar? limadha a?

hal tuhibu alnihaya? lamaa w lamaa la?